

# Warrandyte State Park Planning News

February 1988

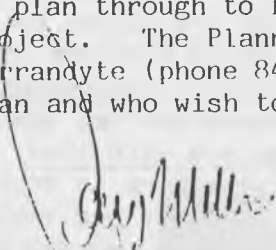
## Message from the Region

Work on the park plan is progressing satisfactorily with additional staff resources now being applied to writing the draft plan which is now scheduled for public exhibition and comment in June 1988.

Ken Gurney and Tony Varcoe (National Parks and Wildlife Service) will each commit 50% of their time to the plan over the next four months in support of Val Polley and Sue Masterson who have been holding the fort for the past few months while finalising Phase 1 of the Community Consultation Program and the Park Resource Inventory respectively. Gary Niewand is no longer full time on the project but will provide advice to the team. The plan's consultative working group which comprises representatives from local, regional and state government agencies will now be supplemented by community representation.

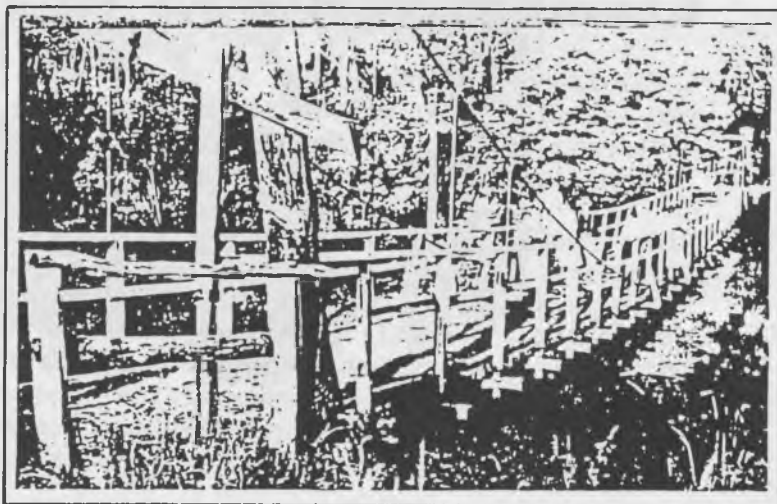
The next few months will be very busy for the planning team, they will however be well supported by other regional and departmental staff, in particular the park staff who eventually will be responsible for implementing the provisions of the plan.

I firmly believe the community's desire to see the plan through to fruition is reflected in the Region's commitment to the project. The Planning Team is currently working at 3 Pound Bend Road, Warrandyte (phone 844 1515) and welcomes visitors to discuss aspects of the plan and who wish to make suggestions or submissions.

  
Doug Miller  
Assistant Regional Manager  
Melbourne Region  
February 1988

## History & Other Data

The photo is of the old footbridge across the Yarra River which was washed away by floodwaters. The Planning Team are still seeking further information to add to their knowledge of the Park. Any information, whether about the history, natural resources or people would be gratefully received. Just phone Val on 844 1515 if you can assist. The Team is particularly looking for the old names for creeks, roads and reserves in the Park from the Warrandyte township up to Mt. Lofty in Wonga Park.



## Background to the Plan

The history of the Warrandyte State Park itself is only twelve years old. It was gazetted in 1975 under the National Parks Act as an important conservation and outdoor recreation area.

The proposal to form a park out of the various public bushland reserves, river frontage area and other Crown land (such as the Timber and Mining Reserves) came in 1969 from a local committee. They foresaw the need to conserve these natural areas particularly with the increasing population and urbanisation pressures caused by the urban fringe extending outwards past Warrandyte. Their foresight is to be commended. The Park today provides a peaceful bushland retreat for visitors and residents alike as well as a haven for fauna and flora in an otherwise rapidly developing area.

The Warrandyte State Park is only 25kms. north-east of Melbourne. It is a popular place for visitors seeking restful bushland scenery for picnics or nature walks as well as river based pursuits such as swimming, canoeing and fishing. The diversity of the scenery, abundant birdlife, orchids and other flora and gold history remains combine with the many craft and antique shops, restaurants and historical reminders in the township itself to make Warrandyte a very popular destination for visitors throughout the year.



The Park consists of a number of bushland reserves, some of which along the Yarra River are joined by a narrow strip of river frontage. The disjointed nature of the Park presents special management problems. Vast lengths of boundary, encroachments into the Park, pest weed invasion and domestic pet incursions are just some of these and careful management will be required to cope with them. To achieve careful management a management plan for the Park is essential to ensure the long term protection of plants, wildlife and natural features yet provide for recreational activities. The planning process for a management plan has been underway for several months and an extensive community consultation process undertaken. The process is well advanced and it is currently envisaged that the Draft Plan will be available for exhibition and further public comment sometime in May 1988.

## Resource Inventory

The Resource Inventory will be part of the proposed management plan. In the initial stages of the planning process, a Resource Team comprising Sue Masterson and Richard Martland spent several months in the park gathering information about its resources.

Since December Sue has been using this information to compile the Resource Inventory. This document will contain a description of the natural and cultural resources of the Warrandyte State Park as well as some historical background. It will contain sections on soils, geology, landscape, vegetation and fauna. A comprehensive map system has been established (copies can be obtained from the planning office) and a photographic record assembled. At this time it is envisaged the Resource Inventory will form part of the Draft Plan and therefore available about June 1988.

## Community Consultation

Extensive consultation with a wide range of individuals, community groups and government agencies has been a major feature of the planning process for the Warrandyte State Park Management Plan. Local resident, Val Polley, was appointed Community Consultation Officer in August 1987, her role being to provide the interface between the community and the Planning Team.

The first step was to circulate Registration of Interest Forms. Over one hundred of these were returned and form the basis of a user group mailing list. The Consultation Officer has attended both committee and public meetings of groups such as the Warrandyte Environment League, Friends of Warrandyte State Park, Donvale Pony Club, bend of Isles Conservation Association to explain the need for a plan and to discuss points of concern. To promote greater awareness of the planning process and assist input into the plan, an attractive visual display has been located at various times at the Eltham and Wurundjeri Festivals, in the Warrandyte High School Library and at the Warrandyte Market. It was then set up, together with other display and resource materials, in the Community Centre in Warrandyte during the month of November.

Two well publicised public meetings have been held, the first in October attracting over 90 people, the second in November somewhat fewer but still in excess of 60.

By the end of January, 1988, 69 submissions had been received with a further five that had been previously received being resubmitted for consideration. A petition supporting horseriding in the Park and containing 168 signatures was also received. Currently the Planning Team is carefully considering all the comments received while preparing the draft management plan. They are very pleased with the response and the contributions to the planning process so far and look forward to continuing participation by the community.

Doug Miller, Area Regional Manager, addressing the Public Meeting on the 17th November, 1987

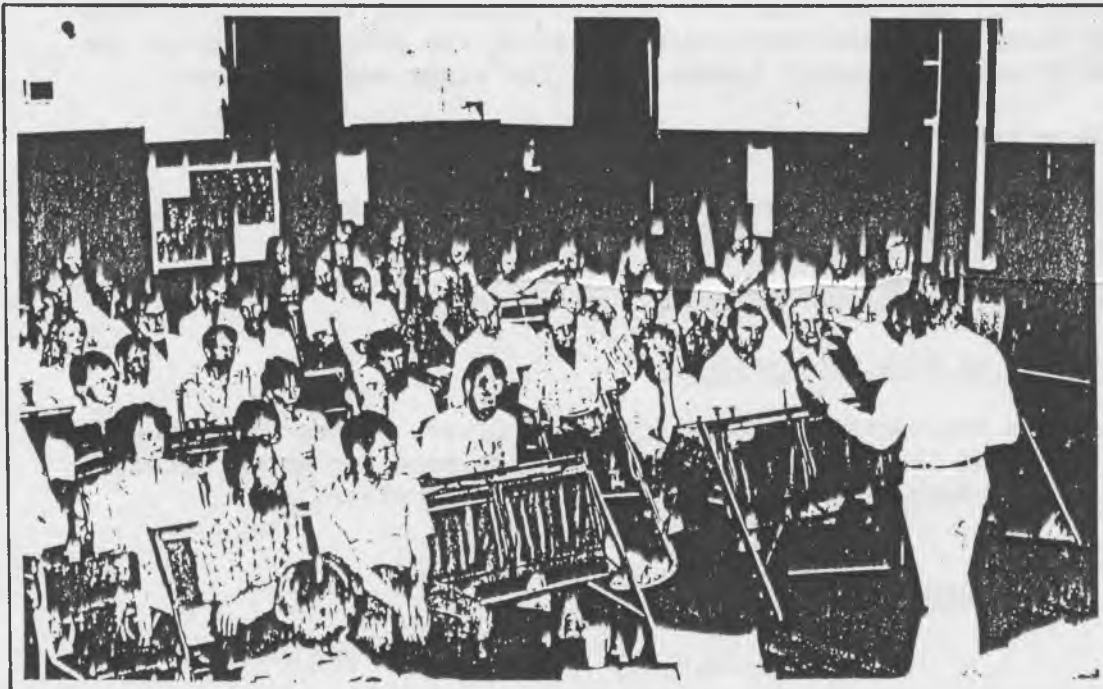


Photo: Ron Parker, Final Year Landscape Architecture Student, R.M.I.T. leading a discussion workshop on Mt. Lofty at the November public meeting.



## **Submissions Received**

### 1. Whole Park Submissions - 21

These are impossible to summarise briefly (some run to more than 30 pages.) Some submissions have responded in detail to each of the issue statements while others have just addressed a few major concerns.

### 2. Canoeing submissions - 3

All from canoe clubs, basically highlighting the need for canoe education and provision of information. All stress the need for more safety measures.

### 3. Plant Submissions - 1

From an orchid group requesting measures to protect plants.

### 4. Horse Submissions - 30

Approximately half of these are letters requesting the right to ride in the Park. The remainder address most of the problems such as the spread of weeds, a permit system, need for signs and education.

### 5. Fire Submissions - 3

2 from local brigades requesting better access tracks, filling points, reduction of fuel and better signs.

1 from Victoria College regarding fuel dynamics.

### 6. Eastern End of Park Submissions - 11

Mostly from residents on opposite side of river. They express some concerns about the scout camp area, feel the need for more controls on pets etc. such as exist on their side of the river.

Total Submissions to date - 69

Further queries or comments should be directed to the Planning Team at 3 Pound Bend Road, Warrandyte 3113. (phone: 844 1515)